

PHOTOSCIENCE

【Top Pette Mechanical Pipettes (Adjustable & Fixed)】

All DRAGONLAB pipettes have been quality tested according to ISO8655-2:2002 with calibration certificate. The quality control involves gravimetric testing of each pipette with distilled water at 22°C.

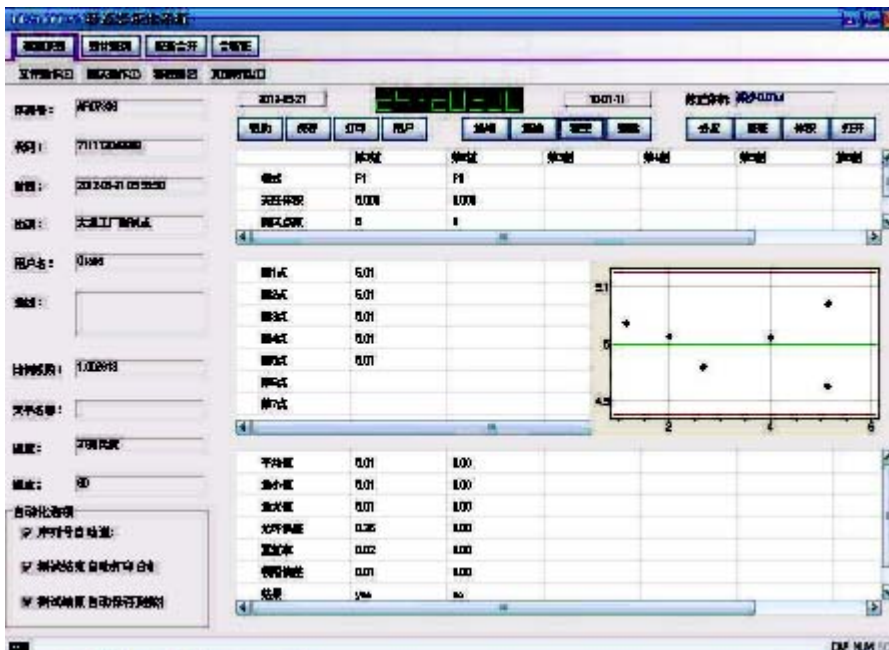
Features for TopPette

- Lightweight, ergonomic, low force design
- Digital display clearly reads volume setting
- The pipettes cover volume range of 0.1µl to 10ml
- Easy to calibrate and maintain with tool supplied
- Design helps avoid repetitive strain injuries
- Calibrated in accordance with ISO8655. Each pipette supplied with individual test certificate
- The low part is available for autoclaving



Features for multi-channel TopPette

- 8 and 12 channel pipettes are available for standard 96-well plate
- Dispensing head rotates for optimum pipetting convenience
- Individual piston and tip cone assemblies allow easy repair and maintenance
- Compound material tip cone design allows visual seal verification
- Can be used with universal style pipette tips



Calibration

Please visit our website for online calibration at www.dragon-lab.com. Through the online calibration software, users can perform simple, accurate and timely calibration with free cost, and avoid the calibration error due to non-professional operation. We will support and help you to achieve consistently excellent results.

**Branch:14 Fawzy Soliman St., From El Haram St., Giza, Egypt / P.O.Box: 129 Giza, Egypt Code:12515
(Tel. Fax:+(202) 33943004 / Mobile: +2 (01223415321 - 01112221096 - 01011811884**

www.photoscience-co.com / info@photoscience-co.com

Single-channel Adjustable Volume Pipettes						
Volume Range	Increment	Test Volume	Maximum permissible systematic error (Inaccuracy)		Maximum permissible random error (Imprecision)	
			%	μL	%	μL
0.1-2.5 μL	0.05 μL	2.5 μL	2.50%	0.0625	2.00%	0.05
		1.25 μL	3.00%	0.0375	3.00%	0.0375
		0.25 μL	12.00%	0.03	6.00%	0.015
0.5-10 μL	0.1 μL	10 μL	1.00%	0.1	0.80%	0.08
		5 μL	1.50%	0.075	1.50%	0.075
		1 μL	2.50%	0.025	1.50%	0.015
2-20 μL	0.5 μL	20 μL	0.90%	0.18	0.40%	0.08
		10 μL	1.20%	0.12	1.00%	0.1
		2 μL	3.00%	0.06	2.00%	0.04
5-50 μL	0.5 μL	50 μL	0.60%	0.3	0.30%	0.15
		25 μL	0.90%	0.225	0.60%	0.15
		5 μL	2.00%	0.1	2.00%	0.1
10-100 μL	1 μL	100 μL	0.80%	0.8	0.15%	0.15
		50 μL	1.00%	0.5	0.40%	0.2
		10 μL	3.00%	0.3	1.50%	0.15
20-200 μL	1 μL	200 μL	0.60%	1.2	0.15%	0.3
		100 μL	0.80%	0.8	0.30%	0.3
		20 μL	3.00%	0.6	1.00%	0.2
50-200 μL	1 μL	200 μL	0.60%	1.2	0.15%	0.3
		100 μL	0.80%	0.8	0.30%	0.3
		50 μL	1.00%	0.5	0.40%	0.2
100-1000 μL	5 μL	1000 μL	0.60%	6	0.20%	2
		500 μL	0.70%	3.5	0.25%	1.25
		100 μL	2.00%	2	0.70%	0.7
200-1000 μL	5 μL	1000 μL	0.60%	6	0.20%	2
		500 μL	0.70%	3.5	0.25%	1.25
		200 μL	0.90%	1.8	0.30%	0.6
1000-5000 μL	50 μL	5000 μL	0.50%	25	0.15%	7.5
		2500 μL	0.60%	15	0.30%	7.5
		1000 μL	0.70%	7	0.30%	3
2-10mL	0.1mL	10mL	0.60%	60	0.20%	20
		5mL	1.20%	60	0.30%	15
		2mL	3.00%	60	0.60%	12

**Branch:14 Fawzy Soliman St., From El Haram St., Giza, Egypt / P.O.Box: 129 Giza, Egypt Code:12515
(Tel. Fax:+(202) 33943004 / Mobile: +2 (01223415321 - 01112221096 - 01011811884
www.photoscience-co.com / info@photoscience-co.com**

8-channel Adjustable Volume Pipettes

Volume Range	Increment	Test Volume	Maximum permissible systematic error (Inaccuracy)		Maximum permissible random error (Imprecision)	
			%	μL	%	μL
0.5-10 μL	0.1 μL	10 μL	1.50%	0.15	1.50%	0.15
		5 μL	2.50%	0.125	2.50%	0.125
		1 μL	4.00%	0.04	4.00%	0.04
5-50 μL	0.5 μL	50 μL	1.00%	0.5	0.50%	0.25
		25 μL	1.50%	0.375	1.00%	0.25
		5 μL	3.00%	0.15	2.00%	0.1
50-300 μL	5 μL	300 μL	0.70%	2.1	0.25%	0.75
		150 μL	1.00%	1.5	0.50%	0.75
		50 μL	1.50%	0.75	0.80%	0.4

12-channel Adjustable Volume Pipettes

Volume Range	Increment	Test Volume	Maximum permissible systematic error (Inaccuracy)		Maximum permissible random error (Imprecision)	
			%	μL	%	μL
0.5-10 μL	0.1 μL	10 μL	1.50%	0.15	1.50%	0.15
		5 μL	2.50%	0.125	2.50%	0.125
		1 μL	4.00%	0.04	4.00%	0.04
5-50 μL	0.5 μL	50 μL	1.00%	0.5	0.50%	0.25
		25 μL	1.50%	0.375	1.00%	0.25
		5 μL	3.00%	0.15	2.00%	0.1
50-300 μL	5 μL	300 μL	0.70%	2.1	0.25%	0.75
		150 μL	1.00%	1.5	0.50%	0.75
		50 μL	1.50%	0.75	0.80%	0.4

Fixed Volume Pipettes

Volume Range	Increment	Test Volume	Maximum permissible systematic error (Inaccuracy)		Maximum permissible random error (Imprecision)	
			%	μL	%	μL
5 μL	-	5 μL	1.3%	0.065	1.2%	0.06
10 μL	-	10 μL	0.8%	0.08	0.8%	0.08
20 μL	-	20 μL	0.6%	0.12	0.5%	0.1
25 μL	-	25 μL	0.5%	0.125	0.3%	0.075
50 μL	-	50 μL	0.5%	0.25	0.3%	0.15
100 μL	-	100 μL	0.5%	0.5	0.3%	0.3
200 μL	-	200 μL	0.4%	0.8	0.2%	0.4
250 μL	--	250 μL	0.4%	1.0	0.2%	0.5
500 μL	-	500 μL	0.3%	1.5	0.2%	1.0
1000 μL	-	1000 μL	0.3%	3.0	0.2%	2.0
2000 μL	-	2000 μL	0.3%	6.0	0.15%	3.0
5000 μL	-	5000 μL	0.3%	15	0.15%	7.5

【MicroPette Mechanical Pipettes (Adjustable & Fixed)】

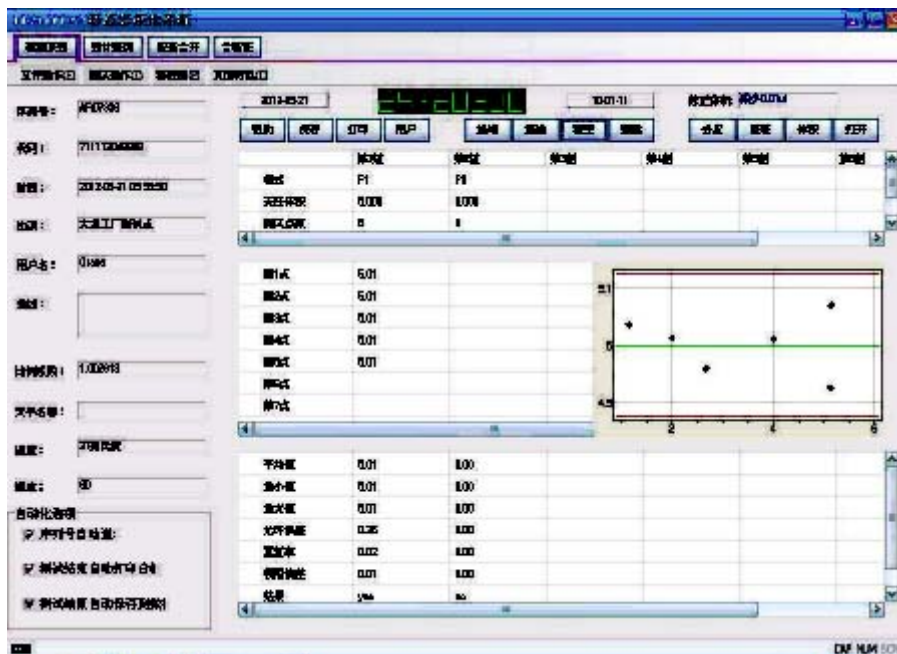
All DRAGONLAB pipettes have been quality tested according to ISO8655-2:2002 with calibration certificate. The quality control involves gravimetric testing of each pipette with distilled water at 22°C.

Features for MicroPette

- Lightweight, ergonomic, low force design
- Digital display clearly reads volume setting
- The pipettes cover volume range of 0.1µl to 10ml
- Easy to calibrate and maintain with tool supplied
- Design helps avoid repetitive strain injuries
- Calibrated in accordance with ISO8655. Each pipette supplied with individual test certificate
- The low part is available for autoclaving
- Manufactured from innovative materials

Features for multi-channel MicroPette

- 8 and 12 channel pipettes are available for standard 96-well plate
- Dispensing head rotates for optimum pipetting convenience
- Individual piston and tip cone assemblies allow easy repair and maintenance
- Compound material tip cone design allows visual seal verification
- Can be used with universal style pipette tips



Calibration

Please visit our website for online calibration at www.dragon-lab.com. Through the online calibration software, users can perform simple, accurate and timely calibration with free cost, and avoid the calibration error due to non-professional operation.

We will support and help you to achieve consistently excellent results.

Single-channel Adjustable Volume Pipettes

Volume Range	Increment	Test Volume	Maximum permissible systematic error (Inaccuracy)		Maximum permissible random error (Imprecision)	
			%	μL	%	μL
0.1-2.5 μL	0.05 μL	2.5 μL	2.50%	0.0625	2.00%	0.05
		1.25 μL	3.00%	0.0375	3.00%	0.0375
		0.25 μL	12.00%	0.03	6.00%	0.015
0.5-10 μL	0.1 μL	10 μL	1.00%	0.1	0.80%	0.08
		5 μL	1.50%	0.075	1.50%	0.075
		1 μL	2.50%	0.025	1.50%	0.015
2-20 μL	0.5 μL	20 μL	0.90%	0.18	0.40%	0.08
		10 μL	1.20%	0.12	1.00%	0.1
		2 μL	3.00%	0.06	2.00%	0.04
5-50 μL	0.5 μL	50 μL	0.60%	0.3	0.30%	0.15
		25 μL	0.90%	0.225	0.60%	0.15
		5 μL	2.00%	0.1	2.00%	0.1
10-100 μL	1 μL	100 μL	0.80%	0.8	0.15%	0.15
		50 μL	1.00%	0.5	0.40%	0.2
		10 μL	3.00%	0.3	1.50%	0.15
20-200 μL	1 μL	200 μL	0.60%	1.2	0.15%	0.3
		100 μL	0.80%	0.8	0.30%	0.3
		20 μL	3.00%	0.6	1.00%	0.2
50-200 μL	1 μL	200 μL	0.60%	1.2	0.15%	0.3
		100 μL	0.80%	0.8	0.30%	0.3
		50 μL	1.00%	0.5	0.40%	0.2
100-1000 μL	5 μL	1000 μL	0.60%	6	0.20%	2
		500 μL	0.70%	3.5	0.25%	1.25
		100 μL	2.00%	2	0.70%	0.7
200-1000 μL	5 μL	1000 μL	0.60%	6	0.20%	2
		500 μL	0.70%	3.5	0.25%	1.25
		200 μL	0.90%	1.8	0.30%	0.6
1000-5000 μL	50 μL	5000 μL	0.50%	25	0.15%	7.5
		2500 μL	0.60%	15	0.30%	7.5
		1000 μL	0.70%	7	0.30%	3
2-10mL	0.1mL	10mL	0.60%	60	0.20%	20
		5mL	1.20%	60	0.30%	15
		2mL	3.00%	60	0.60%	12

Branch:14 Fawzy Soliman St., From El Haram St., Giza, Egypt / P.O.Box: 129 Giza, Egypt Code:12515
(Tel. Fax:+(202) 33943004 / Mobile: +2 (01223415321 - 01112221096 - 01011811884
www.photoscience-co.com / info@photoscience-co.com

8-channel Adjustable Volume Pipettes

Volume Range	Increment	Test Volume	Maximum permissible systematic error (Inaccuracy)		Maximum permissible random error (Imprecision)	
			%	μL	%	μL
0.5-10μL	0.1μL	10μL	1.50%	0.15	1.50%	0.15
		5μL	2.50%	0.125	2.50%	0.125
		1μL	4.00%	0.04	4.00%	0.04
5-50μL	0.5μL	50μL	1.00%	0.5	0.50%	0.25
		25μL	1.50%	0.375	1.00%	0.25
		5μL	3.00%	0.15	2.00%	0.1
50-300μL	5μL	300μL	0.70%	2.1	0.25%	0.75
		150μL	1.00%	1.5	0.50%	0.75
		50μL	1.50%	0.75	0.80%	0.4

12-channel Adjustable Volume Pipettes

Volume Range	Increment	Test Volume	Maximum permissible systematic error (Inaccuracy)		Maximum permissible random error (Imprecision)	
			%	μL	%	μL
0.5-10μL	0.1μL	10μL	1.50%	0.15	1.50%	0.15
		5μL	2.50%	0.125	2.50%	0.125
		1μL	4.00%	0.04	4.00%	0.04
5-50μL	0.5μL	50μL	1.00%	0.5	0.50%	0.25
		25μL	1.50%	0.375	1.00%	0.25
		5μL	3.00%	0.15	2.00%	0.1
50-300μL	5μL	300μL	0.70%	2.1	0.25%	0.75
		150μL	1.00%	1.5	0.50%	0.75
		50μL	1.50%	0.75	0.80%	0.4

Fixed Volume Pipettes

Volume Range	Increment	Test Volume	Maximum permissible systematic error (Inaccuracy)		Maximum permissible random error (Imprecision)	
			%	μL	%	μL
5μL	-	5μL	1.3%	0.065	1.2%	0.06
10μL	-	10μL	0.8%	0.08	0.8%	0.08
20μL	-	20μL	0.6%	0.12	0.5%	0.1
25μL	-	25μL	0.5%	0.125	0.3%	0.075
50μL	-	50μL	0.5%	0.25	0.3%	0.15
100μL	-	100μL	0.5%	0.5	0.3%	0.3
200μL	-	200μL	0.4%	0.8	0.2%	0.4
250μL	--	250μL	0.4%	1.0	0.2%	0.5
500μL	-	500μL	0.3%	1.5	0.2%	1.0
1000μL	-	1000μL	0.3%	3.0	0.2%	2.0
2000μL	-	2000μL	0.3%	6.0	0.15%	3.0
5000μL	-	5000μL	0.3%	15	0.15%	7.5

Branch: 14 Fawzy Soliman St., From El Haram St., Giza, Egypt / P.O.Box: 129 Giza, Egypt Code: 12515
(Tel. Fax: +(202) 33943004 / Mobile: +2 (01223415321 - 01112221096 - 01011811884
www.photoscience-co.com / info@photoscience-co.com

PHOTOSCIENCE

【MicroPette Plus Autoclavable Pipette (Adjustable & Fixed)】

All DRAGONLAB pipettes have been quality tested according to ISO8655-2:2002 with calibration certificate. The quality control involves gravimetric testing of each pipette with distilled water at 22°C.

Fully autoclavable

The MicroPette plus pipettes can be fully autoclaved and withstood steam sterilizes at 121°C, 1 atm for 20 minutes. The pipettes can be autoclaved without special preparations. After autoclaving the pipette must be cooled down and left to dry over 12 hours. It is recommended to check the performance of the pipette after each autoclaving. It is also recommended to grease the piston and seal of the pipette after each 10 autoclaving.

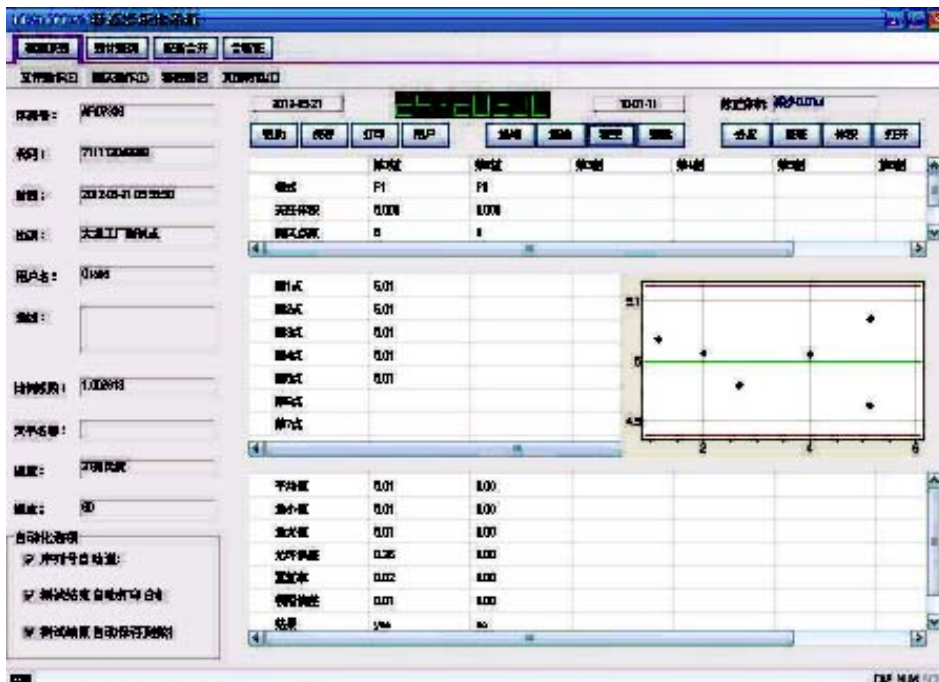


Features for MicroPette plus

- Fully autoclavable
- Lightweight, ergonomic, low force design
- Digital display clearly reads volume setting
- The pipettes cover volume range of 0.1µl to 10ml
- Easy to calibrate and maintain with tool supplied
- Design helps avoid repetitive strain injuries
- Manufactured from innovative material
- Calibrated in accordance with ISO8655. Each pipette supplied with individual test certificate

Features for multi-channel MicroPette plus

- 8 and 12 channel pipettes are available for standard 96-well plate
- Dispensing head rotates for optimum pipetting convenience
- Individual piston and tip cone assemblies allow easy repair and maintenance
- Compound material tip cone design allows visual seal verification
- Can be used with universal style pipette tips



Calibration

Please visit our website for online calibration at www.dragon-lab.com. Through the online calibration software, users can perform simple, accurate and timely calibration with free cost, and avoid the calibration error due to non-professional operation.

We will support and help you to achieve consistently excellent results.

Specifications

Single-channel Adjustable Volume Pipettes						
Volume Range	Increment	Test Volume	Maximum permissible systematic error (Inaccuracy)		Maximum permissible random error (Imprecision)	
			%	μL	%	μL
0.1-2.5μL	0.05μL	2.5μL	2.50%	0.0625	2.00%	0.05
		1.25μL	3.00%	0.0375	3.00%	0.0375
		0.25μL	12.00%	0.03	6.00%	0.015
0.5-10μL	0.1μL	10μL	1.00%	0.1	0.80%	0.08
		5μL	1.50%	0.075	1.50%	0.075
		1μL	2.50%	0.025	1.50%	0.015
2-20μL	0.5μL	20μL	0.90%	0.18	0.40%	0.08
		10μL	1.20%	0.12	1.00%	0.1
		2μL	3.00%	0.06	2.00%	0.04
5-50μL	0.5μL	50μL	0.60%	0.3	0.30%	0.15
		25μL	0.90%	0.225	0.60%	0.15
		5μL	2.00%	0.1	2.00%	0.1
10-100μL	1μL	100μL	0.80%	0.8	0.15%	0.15
		50μL	1.00%	0.5	0.40%	0.2
		10μL	3.00%	0.3	1.50%	0.15
20-200μL	1μL	200μL	0.60%	1.2	0.15%	0.3
		100μL	0.80%	0.8	0.30%	0.3
		20μL	3.00%	0.6	1.00%	0.2
50-200μL	1μL	200μL	0.60%	1.2	0.15%	0.3
		100μL	0.80%	0.8	0.30%	0.3
		50μL	1.00%	0.5	0.40%	0.2
100-1000μL	5μL	1000μL	0.60%	6	0.20%	2
		500μL	0.70%	3.5	0.25%	1.25
		100μL	2.00%	2	0.70%	0.7
200-1000μL	5μL	1000μL	0.60%	6	0.20%	2
		500μL	0.70%	3.5	0.25%	1.25
		200μL	0.90%	1.8	0.30%	0.6
1000-5000μL	50μL	5000μL	0.50%	25	0.15%	7.5
		2500μL	0.60%	15	0.30%	7.5
		1000μL	0.70%	7	0.30%	3
2-10mL	0.1mL	10mL	0.60%	60	0.20%	20
		5mL	1.20%	60	0.30%	15
		2mL	3.00%	60	0.60%	12

**Branch:14 Fawzy Soliman St., From El Haram St., Giza, Egypt / P.O.Box: 129 Giza, Egypt Code:12515
 (Tel. Fax:+(202) 33943004 / Mobile: +2 (01223415321 - 01112221096 - 01011811884
www.photoscience-co.com / info@photoscience-co.com**

8-channel Adjustable Volume Pipettes

Volume Range	Increment	Test Volume	Maximum permissible systematic error (Inaccuracy)		Maximum permissible random error (Imprecision)	
			%	μL	%	μL
0.5-10μL	0.1μL	10μL	1.50%	0.15	1.50%	0.15
		5μL	2.50%	0.125	2.50%	0.125
		1μL	4.00%	0.04	4.00%	0.04
5-50μL	0.5μL	50μL	1.00%	0.5	0.50%	0.25
		25μL	1.50%	0.375	1.00%	0.25
		5μL	3.00%	0.15	2.00%	0.1
50-300μL	5μL	300μL	0.70%	2.1	0.25%	0.75
		150μL	1.00%	1.5	0.50%	0.75
		50μL	1.50%	0.75	0.80%	0.4

12-channel Adjustable Volume Pipettes

Volume Range	Increment	Test Volume	Maximum permissible systematic error (Inaccuracy)		Maximum permissible random error (Imprecision)	
			%	μL	%	μL
0.5-10μL	0.1μL	10μL	1.50%	0.15	1.50%	0.15
		5μL	2.50%	0.125	2.50%	0.125
		1μL	4.00%	0.04	4.00%	0.04
5-50μL	0.5μL	50μL	1.00%	0.5	0.50%	0.25
		25μL	1.50%	0.375	1.00%	0.25
		5μL	3.00%	0.15	2.00%	0.1
50-300μL	5μL	300μL	0.70%	2.1	0.25%	0.75
		150μL	1.00%	1.5	0.50%	0.75
		50μL	1.50%	0.75	0.80%	0.4

Fixed Volume Pipettes

Volume Range	Increment	Test Volume	Maximum permissible systematic error (Inaccuracy)		Maximum permissible random error (Imprecision)	
			%	μL	%	μL
5μL	-	5μL	1.3%	0.065	1.2%	0.06
10μL	-	10μL	0.8%	0.08	0.8%	0.08
20μL	-	20μL	0.6%	0.12	0.5%	0.1
25μL	-	25μL	0.5%	0.125	0.3%	0.075
50μL	-	50μL	0.5%	0.25	0.3%	0.15
100μL	-	100μL	0.5%	0.5	0.3%	0.3
200μL	-	200μL	0.4%	0.8	0.2%	0.4
250μL	--	250μL	0.4%	1.0	0.2%	0.5
500μL	-	500μL	0.3%	1.5	0.2%	1.0
1000μL	-	1000μL	0.3%	3.0	0.2%	2.0
2000μL	-	2000μL	0.3%	6.0	0.15%	3.0
5000μL	-	5000μL	0.3%	15	0.15%	7.5

Branch:14 Fawzy Soliman St., From El Haram St., Giza, Egypt / P.O.Box: 129 Giza, Egypt Code:12515

Tel. Fax:+(202) 33943004 / Mobile: +2 (01223415321 - 01112221096 - 01011811884)

www.photoscience-co.com / info@photoscience-co.com